

HSPA14 Antibody
Rabbit mAb
Catalog # AP90927**Specification**

HSPA14 Antibody - Product Information

Application	WB, IHC, ICC, IP
Primary Accession	Q0VDF9
Reactivity	Rat
Clonality	Monoclonal

Other Names

HSPA14; Heat shock protein HSP60; Heat shock 70 kDa protein 14; HSP70L1; HSP60; Heat shock 70kDa protein 14; HSP70-like protein 1; HSP70-4;

Isotype	Rabbit IgG
Host	Rabbit
Calculated MW	54794 Da

HSPA14 Antibody - Additional Information

Dilution	WB~~1:1000 IHC~~1:100~500 ICC~~N/A IP~~N/A
Purification	Affinity-chromatography
Immunogen	A synthesized peptide derived from human HSPA14
Description	Component of the ribosome-associated complex (RAC), a complex involved in folding or maintaining nascent polypeptides in a folding-competent state. In the RAC complex, binds to the nascent polypeptide chain, while DNAJC2 stimulates its ATPase activity.
Storage Condition and Buffer	Rabbit IgG in phosphate buffered saline , pH 7.4, 150mM NaCl, 0.02% sodium azide and 50% glycerol. Store at +4°C short term. Store at -20°C long term. Avoid freeze / thaw cycle.

HSPA14 Antibody - Protein Information**Name** HSPA14**Synonyms** HSP60, HSP70L1**Function**

Component of the ribosome-associated complex (RAC), a complex involved in folding or maintaining nascent polypeptides in a folding- competent state. In the RAC complex, binds to the

nascent polypeptide chain, while DNAJC2 stimulates its ATPase activity.

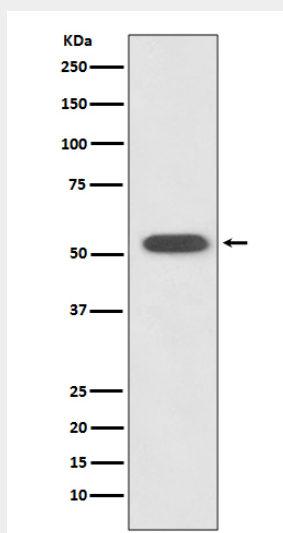
Cellular Location

Cytoplasm, cytosol.

HSPA14 Antibody - Protocols

Provided below are standard protocols that you may find useful for product applications.

- [Western Blot](#)
- [Blocking Peptides](#)
- [Dot Blot](#)
- [Immunohistochemistry](#)
- [Immunofluorescence](#)
- [Immunoprecipitation](#)
- [Flow Cytometry](#)
- [Cell Culture](#)

HSPA14 Antibody - Images

Western blot analysis of HSPA14 expression in K562 cell lysate.